



# HIDEOUT

WESTERN EDITION

TRAVEL TRAILER | FIFTH WHEEL



LUXURY  
COMES STANDARD



WWW.KEYSTONERV.COM/HIDEOUT

# HIDEOUT

RIGHT FEATURES. RIGHT PRICE.

RIGHT NOW







.....

## HIDEOUT LUXURY TRAVEL TRAILERS

.....

With many new upscale luxury features inside and out the Hideout is more than just a travel trailer. Packed full of fun features the Hideout is the perfect choice for your family.

**HIDEOUT**  
**TRAVEL TRAILERS**  
WESTERN EDITION

PGS. 4-11 :::::::::::



.....

## HIDEOUT LUXURY FIFTH WHEELS

.....

The best value in the fifth wheel market, Hideout Luxury fifth wheels offer fully featured, exciting interior & exterior appeal and top selling floorplans at the best price in the industry.

**HIDEOUT**  
**FIFTH WHEELS**

PGS. 12-15 :::::::::::



30RKDS SHOWN IN MAPLECREST DECOR



OPTIONAL TRI-FOLD SLEEPER SOFA



31RBDS SHOWN IN WEDGEWOOD DECOR



**HIDEOUT**  
TRAVEL TRAILERS  
WESTERN EDITION

# LUXURY COMES STANDARD

WITH A UNIQUE LINEUP OF FLOORPLANS THAT ARE LOADED WITH STANDARD FEATURES, HIDEOUT'S RESIDENTIAL STYLE INTERIOR IS YOUR HOME AWAY FROM HOME.



30RKDS WARDROBE SLIDE



**STORE MORE**

**21THWE  
FRONT PLATFORM  
HAULER**



**BRING YOUR TOYS**

**ENJOY FAMILY COMFORT**



**U-NIVERSAL DINETTE**  
**INDUSTRY BEST U-SHAPE DINETTE**

**HIDEOUT - THE LEADER IN CREATIVE CAMPING**

HIDEOUT LEADS THE CATEGORY IN CAMPING SOLUTIONS. IF YOUR LOOKING FOR A BRAND THAT OFFERS MORE, LOOK NO FURTHER; HIDEOUT DELIVERS MORE INTERIOR STORAGE AND MORE COMFORT FOR THE WHOLE FAMILY.

HIDEOUT LUXURY WESTERN EDITION TRAVEL TRAILERS



# HIDEOUT TRAVEL TRAILER

## WESTERN EDITION PACKAGE



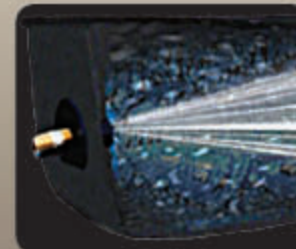
LCI LIGHTED AWNING



FLAT PANEL TELEVISION



7 CU. FT. ATWOOD HELIUM REFRIGERATOR  
W/ DECORATIVE REFRIGERATOR INSERT



BLACK TANK FLUSH



UPGRADE GRAPHICS PKG



JENSEN CD/DVD PLAYER



STAINLESS STEEL APPLIANCES



E-COATED WHEELS (TT)



LP QUICK CONNECT



XL ENTRY ASSIST HANDLE



EXTERIOR TV HOOKUP/  
CABLE AND BRACKET



NIGHT SHADES IN  
LIVING ROOM



CROWN MOLDING  
IN LIVING ROOM



EXTERIOR SHOWER



UNIVERSAL DINETTE WITH OTTOMAN  
& FOLDING DINETTE TABLE



## DARE TO COMPARE



COLD MOUNTAIN PACKAGE  
HEATED & ENCLOSED UNDERBELLY  
W/R-28 ROOF INSULATION



HUGE LIVING SPACE



PRE-DRILLED AND SCREWED  
WOOD STYLES



OVERSIZED STORAGE DOORS



HURRICANE STRAP REINFORCED  
ROOF & WALLS



# HIDEOUT LUXURY TRAVEL TRAILER

## CONSTRUCTION

- 1 Continuous Steel I-Beam Frame
- 2 Walkable Crowned TPO Membrane Roof
- 3 Hurricane Strap Reinforced Structure
- 4 Oversized Pass Through Storage
- 5 Diamond Plate Front Protector
- 6 R-28 Roof Insulation
- 7 3/8" Roof Decking
- 8 Dual 30 Lb. LP Bottles
- 9 Lighted Electric Color Matched Awning

- 10 R-7 Insulation Throughout
- 11 Dual Battery Storage Tray
- 12 XL Entry Assist Handle
- 13 5/8" Seamless Floor Decking
- 14 E-Coat Corrosion Prevention Wheels
- 15 Four Stage Slide Room Seals
- 16 Easy Lift Steps
- 17 Radius Skirting
- 18 Easy Lube Axles

- 19 Aluminum Baked Enamel Siding
- 20 Black Framed, Tinted Safety Glass Windows
- 21 Rain Gutter with Extended Down Spouts
- 22 Fender Skirts
- 23 13,500 BTU Ducted Air Conditioner (Opt. 15K)
- 24 Bumper Sewer Hose Storage
- 25 Exterior TV Mount
- 26 Industry Top Performing Stabilizer Jacks  
(Fastest Extending/Retracting, Trouble Free Stabilizer on the Market)
- 27 Exterior LP Quick Connect
- 28 Heated; Enclosed Fresh Tank or Entire Underbelly  
(Select Models)

ALL OF YOUR  
OUTDOOR KITCHEN  
NEEDS ARE CLOSE  
AT HAND



OUTDOOR AND CAMP  
KITCHEN FEATURES  
ARE NOT AVAILABLE  
ON ALL MODELS



**SCAN HERE**

TO TAKE A 360° INTERIOR VIRTUAL  
TOUR OF THE HIDEOUT TRAVEL TRAILER.  
MORE VIRTUAL TOURS ARE AVAILABLE  
AT KEYSTONERV.COM



**LUXURY**  
COMES STANDARD



# FLOORPLANS



**19FLBWE**

SHIPPING WEIGHT: 4115 EXT. LENGTH: 23' 0"



**20RDWE**

SHIPPING WEIGHT: 4223 EXT. LENGTH: 23' 10"



**21THWE**

SHIPPING WEIGHT: 5530 EXT. LENGTH: 34' 10"



**22RBWE**

SHIPPING WEIGHT: 4771 EXT. LENGTH: 27' 5"



**23RBWE**

SHIPPING WEIGHT: 5250 EXT. LENGTH: 26' 1"



**23RKSWE**

SHIPPING WEIGHT: 5269 EXT. LENGTH: 28' 6"

VISIT OUR ALL NEW WEBSITE TO VIEW INTERIOR PHOTOS & MUCH MORE AT [WWW.KEYSTONERV.COM](http://WWW.KEYSTONERV.COM)



ENJOY THE COMFORTS OF ALL NEW CAMP KITCHEN (AVAILABLE ON HIDEOUT MODELS 22RBWE, 26BHSWE)





# HIDEOUT LUXURY WESTERN EDITION FLOORPLANS



**24BHWE**  
SHIPPING WEIGHT: 4453 EXT. LENGTH: 26' 5"



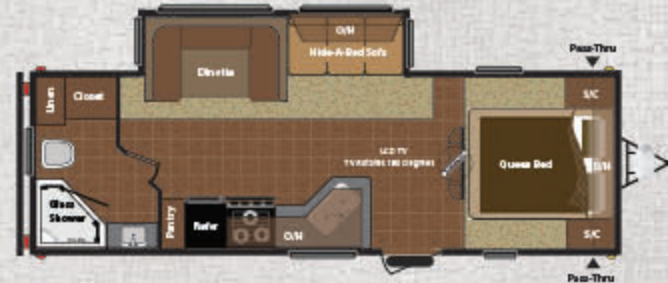
**24RLSWE**  
SHIPPING WEIGHT: 5718 EXT. LENGTH: 28' 7"



**25BHSWE**  
SHIPPING WEIGHT: 5891 EXT. LENGTH: 29' 3"



**26BHSWE**  
SHIPPING WEIGHT: 6423 EXT. LENGTH: 31' 6"



**26RBSWE**  
SHIPPING WEIGHT: 6063 EXT. LENGTH: 29' 10"



**26RLSWE**  
SHIPPING WEIGHT: 6125 EXT. LENGTH: 29' 11"

FULLY FUNCTIONAL OUTDOOR KITCHEN  
(AVAILABLE ON HIDEOUT MODEL 31RBSWE)





# FLOORPLANS



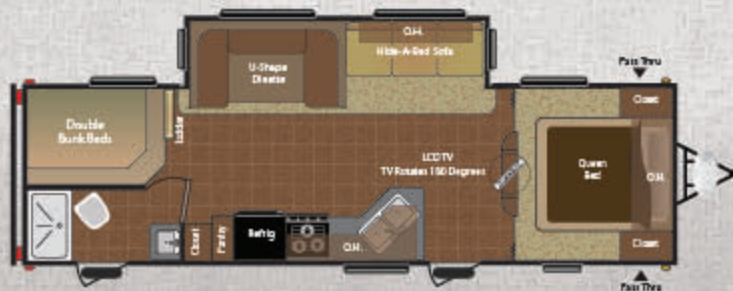
**27RBWE**

SHIPPING WEIGHT: 5033 EXT. LENGTH: 30' 0"



**30RKDSWE**

SHIPPING WEIGHT: 7252 EXT. LENGTH: 34' 1"



**28BHSWE**

SHIPPING WEIGHT: 6564 EXT. LENGTH: 32' 6"



**31RBDSWE**

SHIPPING WEIGHT: 7360 EXT. LENGTH: 34' 4"



HIDEOUT LUXURY WESTERN EDITION

# SPECIFICATIONS

MODEL	19FLBWE	20RDWE	21THWE	22RBWE	23RBWE	23RKSWE	24BHWE	24RLSWE	25BHSWE	26BHSWE	26RBSWE	26RLSWE	27RBWE	28BHSWE	30RKDSWE	31RBDSWE
SHIPPING WEIGHT	4115	4223	5530	4771	5250	5269	4453	5718	5891	6423	6063	6125	5033	6564	7252	7360
CARRYING CAPACITY	2685	2577	2960	2829	2290	2156	2967	1902	1909	1347	1637	1575	2547	2946	2538	2260
HITCH WEIGHT	425	490	590	600	540	650	420	620	800	770	700	730	580	720	990	820
EXTERIOR LENGTH*	23' 0"	23' 10"	34' 10"	27' 5"	26' 1"	26' 6"	26' 5"	28' 7"	29' 3"	31' 6"	29' 10"	29' 11"	30' 0"	32' 6"	34' 1"	34' 4"
EXTERIOR HEIGHT	10' 6"	10' 3"	10' 10"	10' 3"	10' 3"	10' 6"	10' 3"	10' 3"	11' 3"	11' 3"	11' 3"	11' 3"	10' 3"	11' 3"	10' 10"	10' 10"
FRESH WATER	60	60	60	60	60	60	60	60	60	60	60	60	60	60	60	60
WASTE WATER	32	38	38	38	38	38	38	38	38	38	38	38	38	38	38	38
GREY WATER	38	38	38	38	76	64	38	38	38	76	64	38	76	76	76	38
LPG CAPACITY	60	60	60	60	60	60	60	60	60	60	60	60	60	60	60	60

DISCLAIMER: Product information is as accurate as possible as of the date of publication of this brochure. All features, floor plans, and specifications in this brochure are subject to change without notice. Please also consult Keystone's web site at [www.keystoneRV.com](http://www.keystoneRV.com) for more current product information and specifications. Tow Vehicle Disclaimer, CAUTION: Owners of Keystone recreational vehicles are solely responsible for the selection and proper use of tow vehicles. All customers should consult with a motor vehicle manufacturer or their dealer concerning the purchase and use of suitable tow vehicles for Keystone products. Keystone disclaims any liability or damages suffered as a result of the selection, operation, use or misuse of a tow vehicle. KEYSTONE'S LIMITED WARRANTY DOES NOT COVER DAMAGE TO THE RECREATIONAL VEHICLE OR THE TOW VEHICLE AS A RESULT OF THE SELECTION, OPERATION, USE OR MISUSE OF THE TOW VEHICLE. \*Length is defined as the distance from the centerline of hitch pin/coupler to rear bumper of trailer. 01.14



# STANDARDS & OPTIONS

## WESTERN EDITION PACKAGE

- » Upgraded Graphics Package
- » Dometic Power Awning
- » XL Exterior Grab Handle
- » Exterior Shower
- » Black Tank Flush
- » Exterior BBQ LP Quick Connect
- » AM/FM CD, DVD, MP3 True Surround Sound
- » 7 Cu. Ft. Refrigerator
- » 3 Burner Range w/Large Oven
- » Night Shades in Living Area
- » Stainless Steel Appliances
- » Universal Dinette w/Ottoman
- » Dometic Lighted Awning
- » Exterior TV Hook-Up & Bracket

## EXTERIOR

- » Entrance Door Featuring Integrated Strut
- » Cambered Chassis
- » Easy Lube Axles
- » Full Length Outriggers
- » Dual Battery Rack
- » Two 30 lb. LP Bottles with Easy Access Cover
- » Fender Skirts
- » Black Radius Window Frames
- » TV Antenna with Booster
- » Radio Antenna
- » Roof Vents
- » GFI Electrical Outlets
- » Seamless One Piece Roof Walkable Roof

- » Hurricane Strap Reinforced Structure
- » Radius Skirting
- » Oversized Pass Thru Storage Doors
- » Hose Storage in the Bumper
- » Gauge Aluminum Siding
- » 4 1/2" Crowned Roof
- » R-7 Insulation in Sidewalls R-11 in Floor, R-14 in Ceiling
- » Rain Gutters with Extended Down Spouts
- » Four Stage Slide Room Seals
- » Roto-Cast Seamless Holding Tanks

## INTERIOR

- » Radius Interior Bath Walls
- » 4 Interior Surround Sound Speakers
- » Interior TV Bracket
- » LCD TV (standard on Mega Slide and Double Slide units, optional on all other units)
- » Kitchen Countertop Extension
- » Ball Bearing Drawer Guides
- » Decorative Window Treatments
- » 12 Volt 55 Amp Converter
- » 13,500 BTU Air Conditioner
- » Foam Core Insulated A/C Ducts
- » 30,000 BTU Furnace
- » 16.2 Gal/HR Gas/Electric DSI Quick Recovery Water Heater with By Pass Kit
- » Flex Pex Tubing with 10 Year Warranty
- » 78" Interior Height
- » Tub Surround
- » Porcelain Foot Flush Toilet
- » RG6 Cable and Satellite Wiring

- » Pre-Drilled & Screwed Wood Core Cabinetry Throughout
- » Truss Cleats on Both Sides
- » Double Trussed at Openings
- » Radius Corner Blocks
- » Radius Storage Doors
- » Radius Entry Doors

## SAFETY

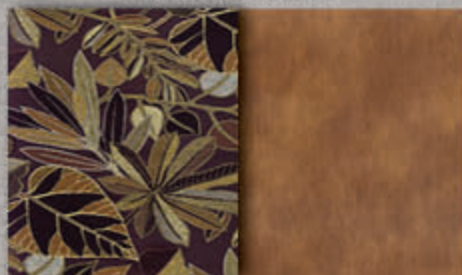
- » Safety Chains
- » Break Away Switch
- » Electric Brakes on All Wheels
- » Carbon Monoxide Detector
- » L.P. Gas Detector
- » Smoke Detector
- » Fire Extinguisher
- » GFI Electrical Outlets
- » Tinted Safety Glass
- » Radial Tires

## OPTIONS

- » Spare Tire and Carrier
- » Tri-Fold Sleeper Sofa (Mandatory-Select Models)
- » Rear Ladder (N/A 19FLB, 24BH, 27RB)
- » 15,000 BTU Air Conditioner
- » Two Additional Stabilizer Jacks (Four Total)
- » Cold Mountain Package - Heated & Enclosed Fresh Tank or Entire Underbelly (Mandatory-Select Models)
- » Camp Kitchen (Mandatory-Select Models)

Standard features and options are subject to change without notice.

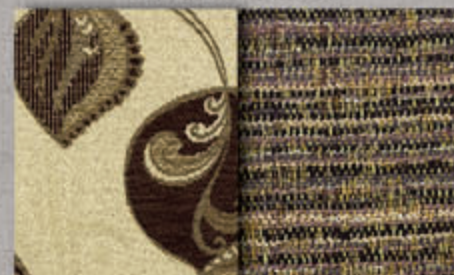
MAPLECREST



WEDGEWOOD



SILVER BIRCH



HIDEOUT LUXURY  
**DECOR**



298BHDS SHOWN IN WEDGEWOOD DECOR



299RLDS BEDROOM



298BHDS BUNKROOM



282RKS EMPRESS SHOWER



HIDEOUT LUXURY FIFTH WHEELS

**HIDEOUT**  
FIFTH WHEELS

## UPGRADE INTERIORS

HIDEOUT LUXURY FIFTH WHEELS LEAD THE INDUSTRY IN STYLISH COMFORT & CUSTOMER CONVENIENCE ALL WITH SUPERIOR QUALITY AND RELIABILITY



# BEST IN CLASS EXTERIOR

## NEW EXTERIOR



The exterior boasts a brand new fiberglass front cap coupled with Hideout's patented Hitch Vision. The new colored sidewall with enhanced graphics package is sure to turn heads.

## HITCH VISION



### HIDEOUT "HITCH VISION"

Hitch Vision moves the dial forward in what customers expect from an RV. There's no looking back!

Hitch Vision gives the fifth wheel user complete confidence to back up and align their truck to Hideout's extended hitch pin using only the built-in mirror for guidance. Automotive LED docking lights allow you to load or unload camping gear day or night. Once you've used Hitch Vision, "there's no looking back" to the inconvenience of turning or straining to see your fifth wheel.

## MAX TURN



Combining focused design and unique product specifications, Max Turn Technology is the leader in optimum turn radius:

Also, Hideout is equipped with a heavy duty extended hitch. Combined - Max Turn Technology makes turning and maneuvering a breeze.

# HIDEOUT FIFTH WHEELS

## EXCITING EXTERIOR FEATURES

ENJOY THE HOOK UP CONVENIENCE OF HIDEOUT'S PATENTED HITCH VISION. THE PIECE OF MIND OF HIDEOUT'S MAX TURN FRONT CAP ALLOWS FOR OPTIMUM TURN RADIUS!



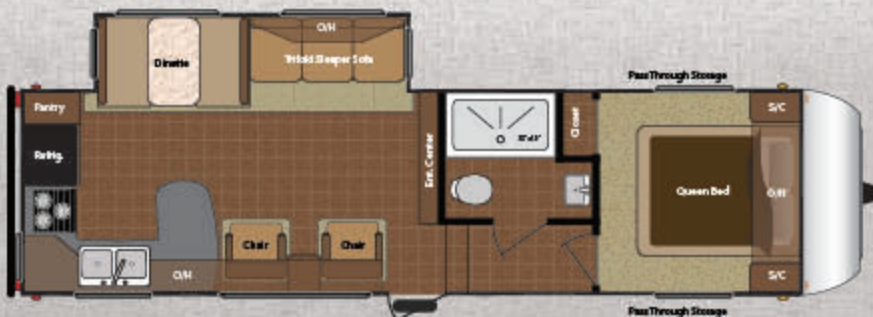
# HIDEOUT LUXURY FIFTH WHEEL FLOORPLANS



**CAMP KITCHEN** ..... **270BHS**  
SHIPPING WEIGHT: TBD | LENGTH: TBD



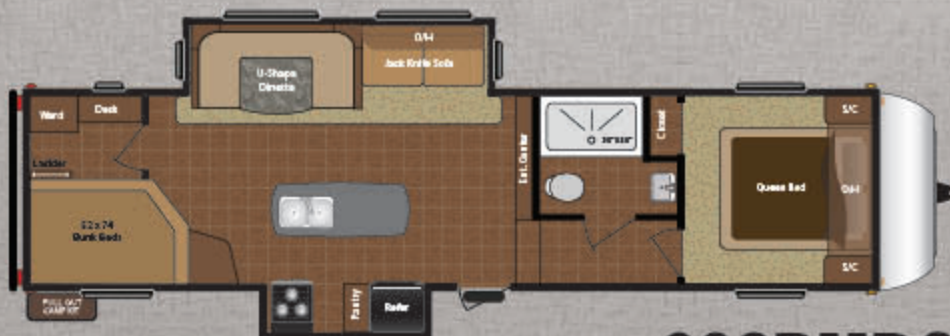
..... **299RLDS**  
SHIPPING WEIGHT: 8100 | LENGTH: 31' 1"



..... **282RKS**  
SHIPPING WEIGHT: TBD | LENGTH: TBD



**OUTDOOR KITCHEN** ..... **308BHDS**  
SHIPPING WEIGHT: 9025 | LENGTH: 35' 6"



..... **298BHDS**  
SHIPPING WEIGHT: 8800 | LENGTH: 34' 11"

## STAY IN TOUCH



Hideout is always just a touch away. You'll find 360 virtual tours, location of your nearest dealer, photos, videos and all of the latest information about Hideout on our easy to navigate website. Everything you need can be accessed anytime, day or night, from home or on the road. You can also find us on the Keystone RV facebook.

[WWW.KEYSTONERV.COM/HIDEOUT](http://WWW.KEYSTONERV.COM/HIDEOUT)



# HIDEOUT LUXURY FIFTH WHEEL STANDARDS & OPTIONS

## HIDEOUT FW LUXURY PACKAGE

- » 32" LCD TV w/ Interior & Exterior Mounting Brackets
- » Outside All-weather Stereo Speakers
- » 13.5 BTU Ducted Air Conditioning
- » Stainless Steel Appliances
- » 7 Cu. Ft. Double Door Refrigerator
- » 6 Gallon Gas/Electric DSI Water Heater
- » Exterior Shower
- » Radius Entry Doors w/Integrated Struts
- » Carbon Monoxide Detector
- » Tinted Safety Glass
- » Lighted Electric Awning
- » Radial Tires
- » Extra Large Entry Assist Handle

## PLATINUM PACKAGE

- » Gel Coated MaxTurn Fiberglass Front Cap
- » Hideout Patented Hitch Vision
- » DVD, CD, MP3, AM/FM True Surround Stereo
- » Pleated Shades in Living Area
- » Black Tank Flush

## EXTERIOR

- » Walk on Roof
- » Gel Coated Fiberglass Exterior
- » Electric Adjustable Front Landing Gear
- » Large Pass through Storage w/Bulkhead Divider
- » Powder Coated I-Beam Frame
- » Cambered Chassis

- » Two Heavy Duty Stabilizer Jacks
- » Aluminum Rims
- » Easy Lube Axles
- » Full Length Outriggers
- » Front Battery Compartment Storage
- » Two Enclosed 30lb Bottles
- » Heated and Enclosed Underbelly
- » Fender Skirts
- » Diamond Plate
- » Black Radius Window Frames
- » TV Antenna with Booster
- » Radio Antenna
- » Roof Vents
- » Cable/Satellite Prep
- » GFI Electrical Outlets
- » Seamless One Piece Roof TPO Full Walk On Roof
- » Radius Skirting
- » Full Strutted Storage under Master Bed
- » Hose Storage in the Bumper
- » R-9 Insulation Throughout
- » Rain Gutters with Extended Down Spouts
- » Four Stage Slide Room Seals
- » Roto-Cast Seamless Holding Tank

## INTERIOR

- » 13,500 BTU Air Conditioner
- » True Sound Entertainment System with AM/FM, CD, DVD, MP3 Jack

- » Foam Core Insulated A/C Ducts
- » Wallpaper Border
- » 72" Slide Ceiling Height
- » 30,000 BTU Furnace
- » Heater with By-Pass Kit
- » Flex Pex Tubing with 10 Year Warranty
- » Ball Bearing Drawer Guides
- » Wall Switches for the Lights
- » RG6 Cable and Satellite Wiring
- » Sculptured Valances with Lambrequins
- » Panoramic Dinette Window
- » Deep Slide Room Cabinets
- » Shirt Closets
- » Tri-Fold Sleeper Sofa

## BEDROOM

- » TV Hook Up
- » Bedspread-Master Bedroom
- » Bed Storage with Struts
- » Cabinets Above Queen Bed
- » Reading Light

## BATH

- » Porcelain Foot-Flush Toilet
- » Tub Surround
- » Shower Exhaust Fan
- » Large Medicine Cabinet
- » Robe and Towel Hooks
- » 30"x50" Empress Shower (Most Models)

## KITCHEN

- » 12 Volt SHURflo® Water Pump
- » Deep Drawer Storage
- » Silverware Drawer Divider
- » Heavy Duty Ball Bearing Drawer Glides
- » Integrated Central Control Panel
- » Range with Hi-Output Burner
- » Exhaust Fan with Light
- » Microwave
- » Reversible Dinette Cushions
- » Large Residential Kitchen Sink
- » High Rise Kitchen Faucet
- » Sink Cover
- » Waste Basket Storage
- » Pre-Drilled & Screwed Wood Core Cabinetry Throughout
- » Mortise and Tenon Hardwood Joints
- » Overhead Cabinets Above the Sink
- » Counter Top Extensions

## OPTIONS

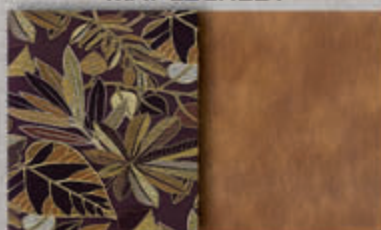
- » Spare Tire Carrier/Cover
- » Exterior Ladder
- » Free Standing Dinette
- » 15,000 BTU Air Conditioner

Standard features and options are subject to change without notice.

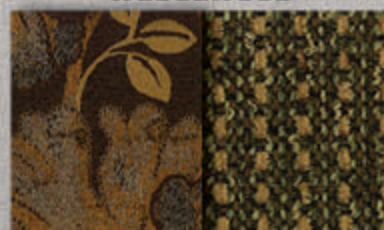
# HIDEOUT LUXURY FIFTH WHEEL SPECIFICATIONS & DECOR

MODEL	270BHS	282RKS	298BHDS	299RLDS	308BHDS
SHIPPING WEIGHT	TBD	TBD	8800	8100	9025
CARRYING CAPACITY	TBD	TBD	1845	2220	1695
HITCH WEIGHT	TBD	TBD	1845	1520	1920
EXTERIOR LENGTH*	TBD	TBD	34' 11"	31' 1"	35' 6"
EXT HEIGHT	TBD	TBD	11' 9"	11' 9"	11' 9"
FRESH WATER	TBD	TBD	45	45	45
WASTE WATER	TBD	TBD	38	38	76
GREY WATER	TBD	TBD	64	38	38
LPG CAPACITY	TBD	TBD	60	60	60

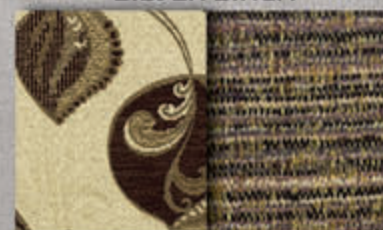
MAPLECREST



WEDGEWOOD



SILVER BIRCH



DISCLAIMER: Product information is as accurate as possible as of the date of publication of this brochure. All features, floor plans, and specifications in this brochure are subject to change without notice. Please also consult Keystone's web site at [www.keystonerv.com](http://www.keystonerv.com) for more current product information and specifications. Tow Vehicle Disclaimer: CAUTION: Owners of Keystone recreational vehicles are solely responsible for the selection and proper use of tow vehicles. All customers should consult with a motor vehicle manufacturer or their dealer concerning the purchase and use of suitable tow vehicles for Keystone products. Keystone disclaims any liability or damages suffered as a result of the selection, operation, use or misuse of a tow vehicle. KEYSTONE'S LIMITED WARRANTY DOES NOT COVER DAMAGE TO THE RECREATIONAL VEHICLE OR THE TOW VEHICLE AS A RESULT OF THE SELECTION, OPERATION, USE OR MISUSE OF THE TOW VEHICLE. \*Length is defined as the distance from the centerline of hitch pin/coupler to rear bumper of trailer. 01.14



# HIDEOUT TRAVEL TRAILERS WESTERN EDITION

# HIDEOUT FIFTH WHEELS



HIDEOUT BRANDS ARE A PROUD RECIPIENT OF THE 2013  
DEALER SATISFACTION QUALITY CIRCLE AWARD

RIGHT FEATURES. RIGHT PRICE. RIGHT NOW. | [WWW.KEYSTONERV.COM/HIDEOUT](http://WWW.KEYSTONERV.COM/HIDEOUT)

YOUR LOCAL DEALER IS:



JANUARY 2014

## WESTERN EDITION

## BUY LOCALLY PURCHASING YOUR RV LOCALLY

It's up to you where you purchase your new Hideout, but may we suggest your local dealer? Not only does it help your local economy and provide jobs, but it will also give you an opportunity to develop a service relationship with someone that will come to know you and your coach. Congratulations on finding the best built, best equipped, best value in the industry, and happy travels!



**Keystone RV  
Company**

[WWW.KEYSTONERV.COM](http://WWW.KEYSTONERV.COM)  
574.535.2100 • 2642 HACKBERRY DRIVE  
P.O. BOX 2000 • GOSHEN, IN 46527



Go RVing.



CONNECT WITH KEYSTONE RV AND STAY UP TO  
DATE WITH PRODUCT NEWS AND INFORMATION

VISIT OUR WEBSITE TO VIEW INTERIOR PHOTOS,  
360 VIRTUAL TOURS AND MUCH MORE.

